

8 Review Day 4

Write an equation for the line passing through the following points.

$(-6, 12)$ and the origin

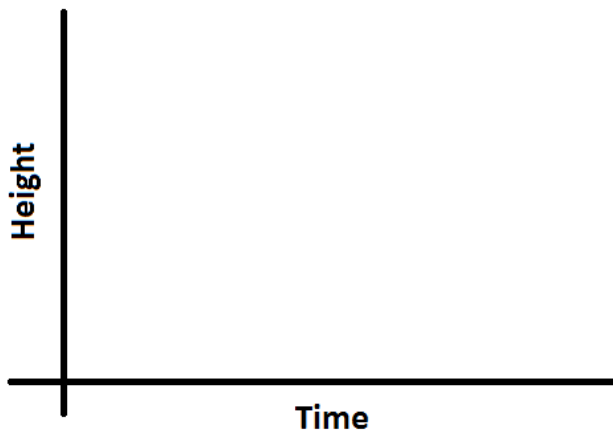
$(8, -16)$ and $(-4, 11)$

What is the volume of a cube with side length 3 meters?

What is the side length of a square with area 301 m^2 ?

Graph the story.

Esther climbs onto the roof of her house. She realizes that she forgot her telescope, so she goes to retrieve it from her basement. She returns to the roof and spends several hours watching the stars. Then, as Esther is heading back inside, she trips and falls off the roof and into an open sewer.



Perform the calculations using only your brain.

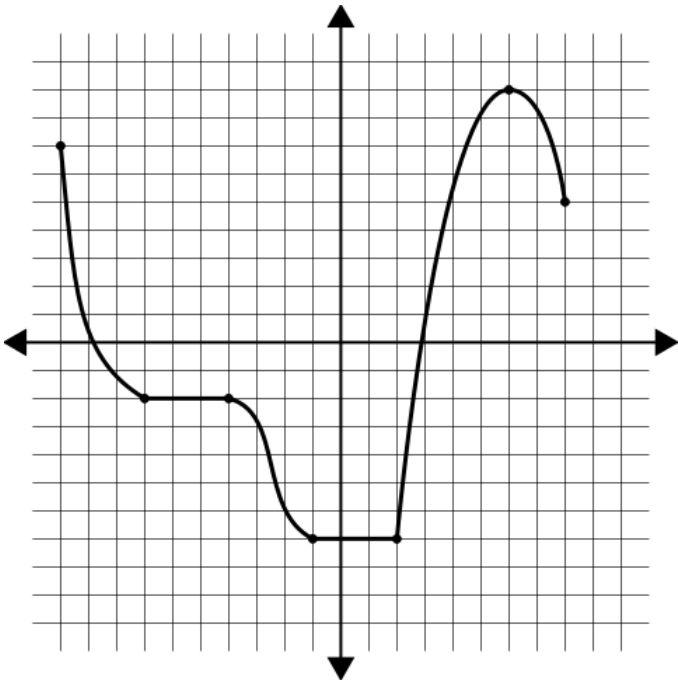
$$(\sqrt{58})^2$$

$$-3 * 2 + 1 - (16 \div 4 + 2)$$

$$\sqrt[3]{14} \cdot \sqrt[3]{14} \cdot \sqrt[3]{14}$$

$$(-5 + 6 \div 3)^3$$

Write the interval using an inequality. Check the appropriate box.



Interval	Increasing	Decreasing	Constant

Fill in the blank spaces in each table. Write an equation for the relationship and explain why it is or is not proportional.

0	
1	4
2	6
	8
6	
10	
	24

0	
4	
8	32
10	40
	60
	100
50	

Equation:

Equation:

Is the relationship proportional? Why or why not?

Is the relationship proportional? Why or why not?